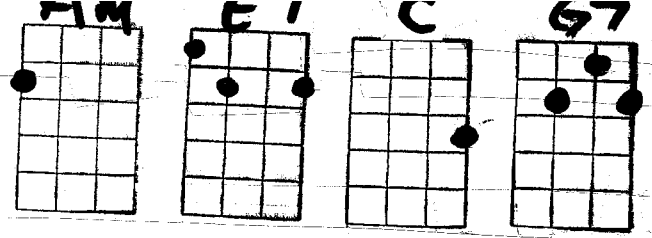


Am 1/2 E7 1/2 Am 1/4



Am 1/2 E7 1/2 Am 1/2 G7 1/2

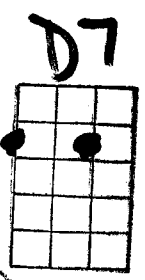
HAWAIIAN VAMP

C 1/1 Pause 1/3 G7 1/8 C 1/8

DOWN IN HONOLULU BESIDE THE SEA

G7 1/8

THAT NAUGHTY STRAIN KEEPS HAUNTING ME

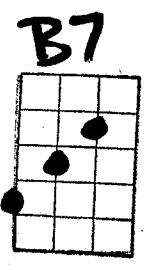


JUST A DREAMY HULA THAT SWEET REFRAIN

G7 1/4 E7 1/4

G 1/8

IT MAKES ME QUIVER, SHIVER, AND SHAKE



AND THEN WE DO IT AGAIN. (HEY)

1: Am E7 Am G 1/2 B7 1/2 Am E7 Am

C 1/2 4

2: Am E7 Am 4 times

THE NAUGHTY HULA GLIDE

THE CREEPY SNEAKY SLIDE

end

THEY DANCE IT NIGHT AND DAY

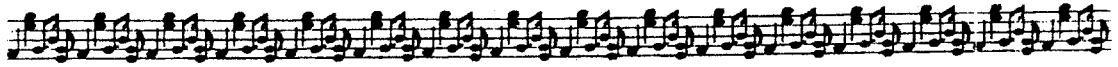
G7 1/4

AND CHASE THE BLUES AWAY (HEY)

C 1/1 Pause

Am E7 Am

Am E7 Am



HAWAIIAN VAMP

C/16

T' WAS ON A MOONLIGHT NIGHT

YOU GET THE HULA NOTION

Pause/4

C/4

HOLD YOUR FEET DOWN TIGHT

G7/4

C

Am E7 Am

AND WIGGLE LIKE THE OCEAN

Am E7 Am

CHORUS:

G7

C/24

A MAIDENS FAIR TOO SEE

SHE LIVES AT WAIKIKI

JUST LIKE A RIPPLING TIDE

G7/4

SHE DOES THE HULA

GLIDE, . . . IDE . . .

G7/1

C/3

G7/1

C/4

C/3

repeat
from the
top