

# Honolulu

Honolulu

Words by  
GUS KAHN

Music by  
HARRY WARREN

FIRST NOTE



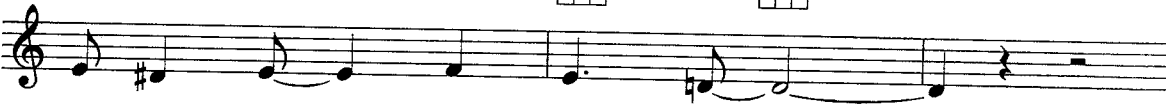
Moderately fast



I'm on my mer - ry way, —



I'm on a hol - i - day, — I mean I'm on my



way to Hon - o - lu - lu. —



The days just drift a - long, — the nights are



filled with song, — I hope that I'm not wrong on Hon - o -

G7 C C9 F Fdim

lu - lu. I bought a u - ku -

F C Cdim C

le - le. I prac-tice on it dai - ly.

F Fdim F

Sounds wick - y wack - y wai - ly,

C A $\flat$ 7 G7 C

my hu - la hu - la song. I know it's

G7 C G7

gon - na be an aw - ful blow to me, un -

C C9

less I find ro - mance in Hon - o - lu - lu,

F Fm6

I know just how it looks, —

C D7 C

from the pret - ty pic - ture books, — so please don't dis - ap -

G7 C A

point me, Hon - o - lu - lu, — my Hon - o -

D7 G7 C

lu - lu — by the cor - al sea. —



Shirley Temple at Waikiki Beach. Hawaii State Archives.