

MANUELA BOY

Words and Music by
JOHNNY NOBLE

FIRST NOTE

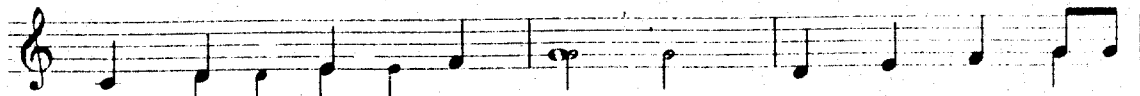


Moderately



Pa - pa works for the ste - ve - dore,
Grand - pa works in the ta - ro patch,
Pa - pa is a big ma - ka - i
Pa - pa comes home see ma - ma,

G7



ma - ma makes the leis; sis - ter goes with the
grand - ma mix - es the poi; broth - er goes with
down by the old fish mar - ket, aunt - y sells good
ma - ma drink - ing ok - e. pa - pa burns up



hao - le boy, broth - er goes au - wa - na.
all the girls, comes home an - y old time.
a - la - mi - hi, oh a - ha ha a - ha ha.
with Ma - ma; me gives Ma - ma black eye.

Chorus, moderately



Man - u - e - la boy, my dear boy, you no more hi - la

English translation of Hawaiian words in this song:

Haole - white

Auwana - vagabond

Hilahila - shame

Aala Park - a famous park in Honolulu

Hiamoe - sleep

Poi - Hawaiian staff of life food

Makai - policeman

Alamihī - black Hawaiian rock crabs



C G7

hi - la, no more five cents, no more house. You

C

1., 2., 3. D7 G7

go A - a - la Park hi - a - mo - e.

C

4. D7 G7 C

go A - a - la Park hi - a - mo - e.

THE HAWAIIAN VAMP

At the end of "Manuela Boy" is a set of chords that makes that song sound distinctively "Hawaiian." Often known as a "turn-around," this chord progression acts as sort of a musical punctuation and can appear at the beginning, end, or in-between verses of a song. One of the most recognizable variations of this vamp is known as a II7-V7-I progression and in the key of C this translates into D7-G7-C. Here is that progression in some other popular keys.

- Key of D E7-A7-D
- Key of F G7-C7-F
- Key of G A7-D7-G
- Key of A B7-E7-A

You might want to try adding this "turn-around" to some of the other songs in this book.

Key D

E7 A7 D

Key G

A7 D7 G

Key C

D7 G7

Key F

G7 C7 F

Key A

B7 E7 A

C

C

