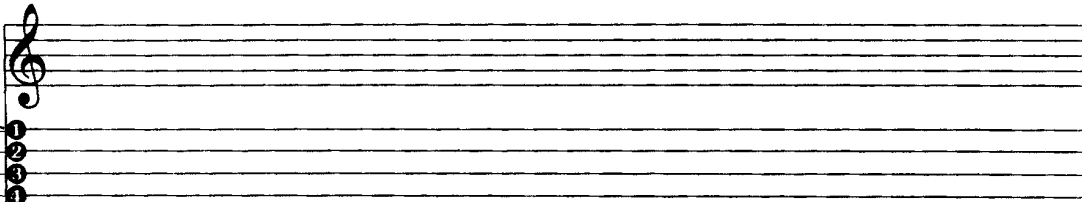
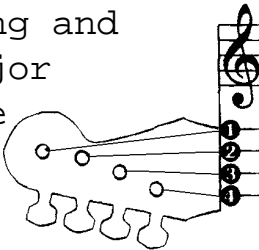


Ukulele  
tuning and  
C Major  
scale



1  
2  
3  
4

G C E A

0 0 0 0

My dog has fleas

The "0" on a string means play that string open.

A number on a string means press that fret number and play that string.

1  
2  
3  
4

C D E F G A B C B A G F E D C

0 2 0 1 3 0 2 3 2 0 3 1 0 2 0

Do re mi fa so la ti do ti la so fa mi re do

1  
2  
3  
4

G C E A

3 0 0 0

0 0 4 5

My dog has fleas

When the ukulele is properly tuned, these sound the same:

- G string open and E string 3<sup>rd</sup> fret
- E string open and C string 4<sup>th</sup> fret
- A string open and E string 5<sup>th</sup> fret

