

# HAWAIIAN WAR CHANT

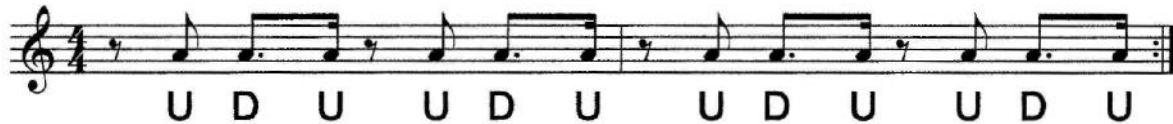
English Lyric by Ralph Freed

Prince Leleioh ku, 1860s  
Music by Johnny Noble, 1936

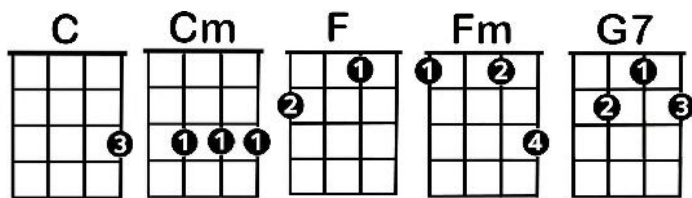
Ukulele Tuning: GCEA

I Wanna Rest Strum: (index finger only)

I Wan-na Rest, I Wan-na Rest, I Wan-na Rest, I Wan-na



Latin Strum: (*rasgado, rasgueado* on second beat)



Music Terms<sup>1</sup>: *rasgado, rasgueado* = in guitar playing, a right hand flamenco technique where the fingers from the little finger to the index finger strum the strings quickly; line under a chord = bump

**INTRO:** **C** (I Wanna Rest)

**C**  
TA-HU-WA-I LA A TAHUWAI WAI LA

**C**  
There's a sunny little funny little melody

EHU HENE LA A PILI KOO LUA LA

That was started by a native down in Waikiki

**F** **C**  
PU-TU-TU-I LU A I-TE TOE LA

**F** **C**  
He would gather a crowd down beside the sea

**G7** **C**  
HA-NU LIPO ITA PA-A-LAI

**G7** **C**  
And they'd play his gay Hawaiian chant

**C**  
TA-HU-WA-I LA A TAHUWAI WAI LA

**C**  
Soon the other little natives started singing it

EHU HENE LA A PILI KOO LUA LA

And the hula hula maidens started swinging it

<sup>1</sup> Leonard, Hal. *Pocket Music Dictionary*. Hal Leonard Publishing Corporation, 1993.

**F** **C**  
 PU-TU-TU-I LU A I-TE TOE LA  
**G7** **C**  
 HA-NU LIPO ITA PA-A-LAI  
**F C G7 C**  
 AU WE TA HU-A-LA  
**F C G7 C**  
 AU WE TA HU-A-LA

**F** **C**  
 Like a tropical storm that's the way it hit  
**G7** **C**  
 Funny little gay Hawaiian Chant.  
**F C G7 C**  
 Ow way tah Tu-a-lan  
**F C G7 C**  
 Me big bad fight-ing man.

## CHANGE TO LATIN STRUM

**Cm**  
 TA-HU-WA-I LA A TAHUWAI WAI LA

**Cm**  
 Tho it started on an island down Hawaii way

EHU HENE LA A PILI KOO LUA LA  
**Fm** **Cm**  
 PU-TU-TU-I LU A I-TE TOE LA  
**G7** **Cm** (REPEAT  
 HA-NU LIPO ITA PA-A-LAI SECTION)  
**Fm Cm G7 Cm**  
 AU WE TA HU-A-LA  
**Fm Cm G7 C**  
 AU WE TA HU-A-LA

It's as popular in Tennessee or loway  
**Fm** **Cm**  
 If you wander into any cabaret  
**G7** **Cm** (REPEAT  
 You will hear this gay Hawaiian Chant. SECTION)  
**Fm Cm G7 Cm** \*2<sup>nd</sup> time to END  
 Ow way tah Tu---a-lan  
 Me big bad fighting man

## REPEAT SONG FROM START, CONTINUE LATIN STRUM

\*END: **F C G7 C C** cha cha cha  
 AU WE TA HU-A-LA

\*\*\*

**Learn how to play this arrangement plus** watch a video story behind the song in Lesson 38 of Monthly Online Lessons by subscription through [www.UkuleleMeleOnMaui.com](http://www.UkuleleMeleOnMaui.com).

This Hawaiian song was written by Prince Leleioh ku in the 1860s and titled "K ua I Ka Huahua'i or "We Two in the Spray." The Hawaiian lyrics describe two palace lovers who met in secret. In 1936, composer Johnny Noble borrowed the melody from this song, left the original Hawaiian lyrics as they were, Ralph Freed added English lyrics, and named it Hawaiian War Chant. Tommy Dorsey recorded the song in its modern form on November 29, 1938, and it was released on Victor Records in the United States and Canada. Hilo Hattie sang it in her shows in Hawai'i. This arrangement follows the Hawaiian lyrics, and then repeats the song with the English lyrics while playing two different 'ukulele strums.

(music with Hawaiian & English words) The Hawaiian Sheet Music Collection, Alfred Publishing Co., Inc., 2008, p. 56-59.

(story) [http://en.wikipedia.org/wiki/Hawaiian\\_War\\_Chant](http://en.wikipedia.org/wiki/Hawaiian_War_Chant)

(story) <http://www.squareone.org/Hapa/h62.html>