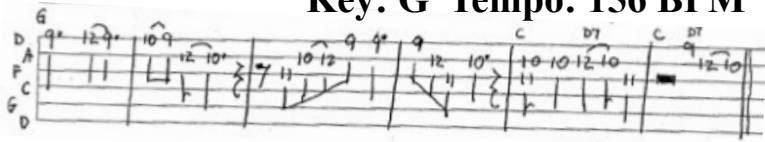


Key: G Tempo: 156 BPM

Ipo Lei Momi

Keali'i Reichel



Backup vocals harmonize underline

Intro: Count in, all play: G/16 C/2 D7/2 C/2 D7/2

Where are you, O precious pearl wreath,
Glowing enticingly in the dark of night?

2X ^{G/8} 'Auhea 'oe e ka ipo lei momi, lā ē ^{C/4 D7/12}

^{C/4 G/4} 1: repeat
'Ume'ume noweo i ka pōuliuli, lā ē

2: C/2 D7/2 go on

Turn to me and touch my nose,
Don't rush, though, or all will be lost.

2X ^{G/8} E huli mai 'oe a honi ka ihu, lā ē ^{C/4 D7/12}

^{C/4 G/4} 1: repeat
Mai pūlale na'e o nalo auane'i, lā ē

2: C/2 D7/2 go on

Hands grope until the sweet spot is found,
As the sharp beak prods back and forth beneath
the swaying covers

2X ^{G/8} Lālau lima a pa'a i ka pono, lā ē ^{C/4 D7/12}

^{C/4 G/4} 1: repeat
'O'e'o'e ka nuku i ke kapa moe holu, lā ē

2: C/2 D7/2 go on

2X ^{G/8} Ua lomilomi 'ia a miko ka 'ili, lā ē ^{C/4 D7/12}

The skin is rubbed until it is soaked
And we grunt until there is no more breath

^{C/4 G/4} 1: repeat
A nū kāua a paupauaho, lā ē

2: C/2 D7/2 go on

^{G/8} Ha'ina 'ia mai 'ana ka puana, lā ē ^{C/4 D7/5}

Tell the story
But be quiet lest the birds awaken

rest/7 ^{C/4 G/4}
E shh! Kaua o ala nā manu, lā ē

^{G/8} Ha'ina 'ia mai 'ana ka puana, lā ē ^{C/4 D7/5}

rest/7 ^{C/4 G/4 C/4 G/4 C/2 D7/2 G/4}
E shh! Kaua no make noise, lā ē ē ē

