


LOVE SONG OF KALUA

Hawaiian Translation by
EMILY K. TAYLOR (T.H.)

Words and Music by
KEN DARBY

Slowly, with pulsing rhythm

B \flat /F  F7  B \flat 



B \flat /F 

This is the night of love the shin-ing hour of Ka -
O ne - i - a ka - po nou ka ha li - a e Ka -



F7 

lu a. Her song is in the air,
lu a. Nou no e ka i - ini,



her lips are wait-ing there. Who _____ will be Ka - lu a's on - ly
 aka pu - u - wai o Waila _____ kaha-lia a lo ha a ka -

Bb

love? _____ Be-fore the night is old
 lu - a. Hoo he - no nei ka ipo

Who will her lov - er be? Who will her lov - er be?
 O wa - i ha - ha - lia Ka'a no' - i a - lo - ko

Bb7 Fm7 Bb7 Eb

(my his) arms will hold Ka - lu a.
 ia o - e e Ka - lu a.



And where the trade winds blow, soft and low our love will blos-som bright
 Ka - pu - a i mo ha - la ike au moe Hi - i poi ike a - lo - ha



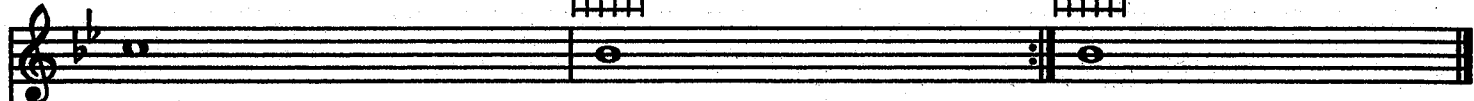
in the night, and stars will sing a - bove the love song of Ka -
 ma ka - wae No no — kau a kau Nou ka i - inie Ka -



1.



2.



lu - a. a. a.
 lu - a. a. a.

