

Intro: Ukulele first four measures  
 All play on second F  
 Tempo 78

# Mau-i Waltz

**A** F F<sup>dim7</sup> G<sup>m7</sup> C<sup>7</sup> F F<sup>dim7</sup> G<sup>m7</sup> C<sup>7</sup>

**B** F F<sup>7</sup> B<sup>b</sup> C<sup>7</sup>

I hear the Mau-i waltz, it brings back mem-o-ries. I hear the Mau-i waltz,

F F<sup>7</sup> B<sup>b</sup> B<sup>b6</sup>

and you are haunt-ing me. The night you told me that you loved me so,

B<sup>b6</sup> C<sup>7</sup> F G<sup>m7/C</sup> C<sup>7</sup>

but no one told me that when the dance was through I'd be los-ing you.

F F<sup>7</sup> B<sup>b</sup> C<sup>7</sup>

I hear the Mau-i waltz, my arms are emp-ty now. I hear the Mau-i waltz,

F F<sup>7</sup> B<sup>b</sup>

it does - n't hurt some-how. You're here with me when the mu - sic starts to

B<sup>b6</sup> F/C C<sup>7</sup> F D<sup>7</sup>

play. Play on, play on Mau-i waltz.

**C** G G<sup>7</sup> C D<sup>7</sup> G G<sup>7</sup> C C<sup>6</sup> C<sup>m6</sup> D<sup>7</sup> G A<sup>m7/D7</sup>

G G<sup>7</sup> C D<sup>7</sup> G G<sup>7</sup> C C<sup>6</sup> G/DD<sup>7</sup> G



D

G

G7

C

2



I hear the Mau-i waltz, it brings back mem-o - ries.

D7

G

G7



I hear the Mau-i waltz, and you are haunt-ing me. The night you told me that

C

C6

Cm6

D7

G



you loved me so, but no one told me that when the dance was through

A<sub>m7</sub>/D

D7

G

G7

C



I'd be los-ing you. I hear the Mau-i waltz, my arms are emp-ty now.

D7

G

G7



I hear the Mau-i waltz, it does - n't hurt some-how. You're here with

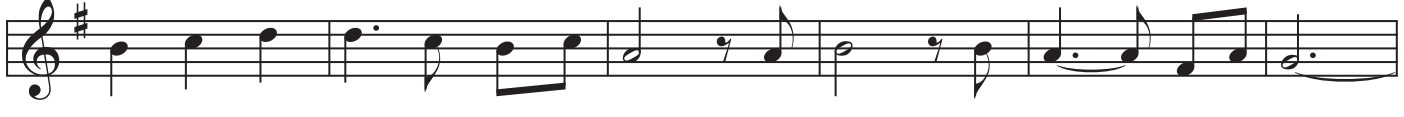
C

C6

G/D

D7

G



me when the mu - sic starts to play. Play on, play on Mau-i waltz.

D7

C

C<sub>m6</sub>

G

n.c.



Play on, play on Mau-i waltz.