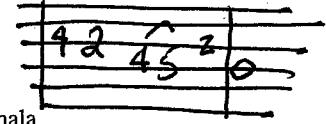


no capo
finger pick

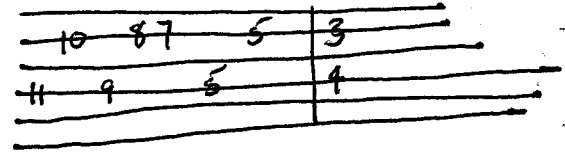
Pua O Ka Mākāhala

C G7 F G7
 Auhea wale ana 'oe, ē
 F C
 Ka pua o ka mākāhala
 G7 F G7
 Mai ho'ohala mai 'oe, ē
 F C
 I ka pilina ua pa'a



Where indeed are you
O blossom of the mākāhala
You should not find fault
In a relationship that is secure

G7 C



One would think it was settled
Your thoughts would be right here
And yet you are lingering elsewhere
In these days of your beautiful youth

C G7 F G7
 Keu nō paha ua pa'a, ē
 F C
 Kou mana'o i 'ane'i
 G7 F G7
 Pili 'ia aku 'oe, ē
 F C
 Ko lā he kanaka u'i

But lacking the round thing, coin
That stable tie is ended
Tell the story in the refrain
The blossom of the mākāhala

C G7 F G7
 Nele i ka mea poepoe, ē
 F C
 Pau ka pilina ua pa'a
 G7 F G7
 Ha'ina mai ka puana, ē
 F C
 Ka pua o ka mākāhala

Katie Stevens 'I'i writes of the mākāhala, a twining shrub. While the plant may be on one's property, the flowers may wander afar. This metaphor describes a lover who strays, enjoying the prowess of youth and beauty, but when the money is gone, the affair is done. 1916.